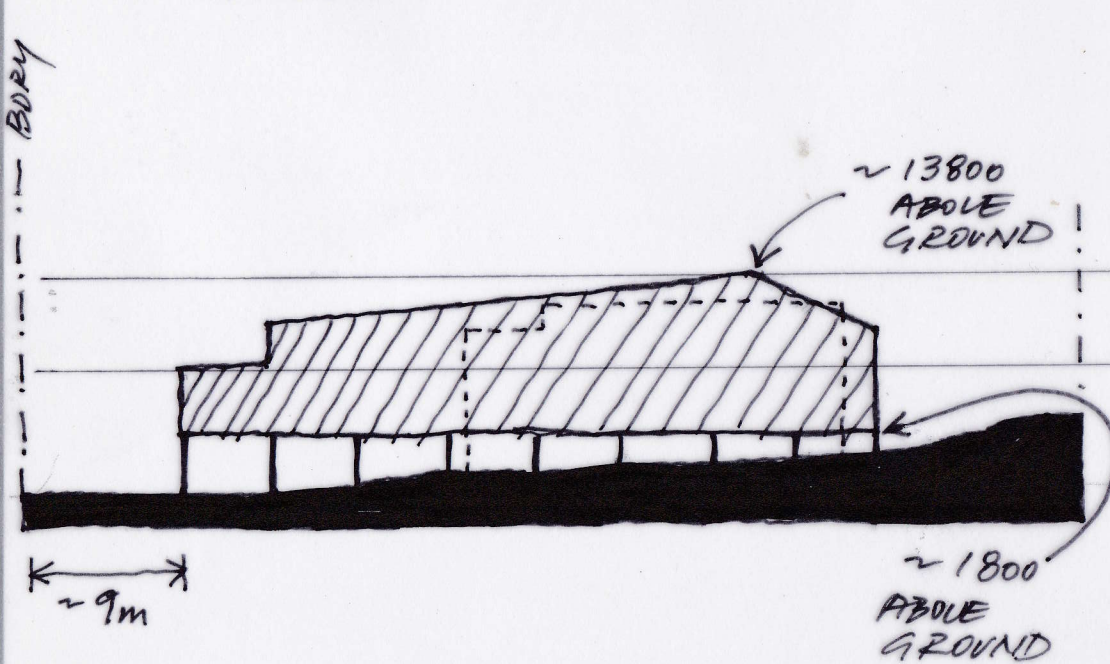
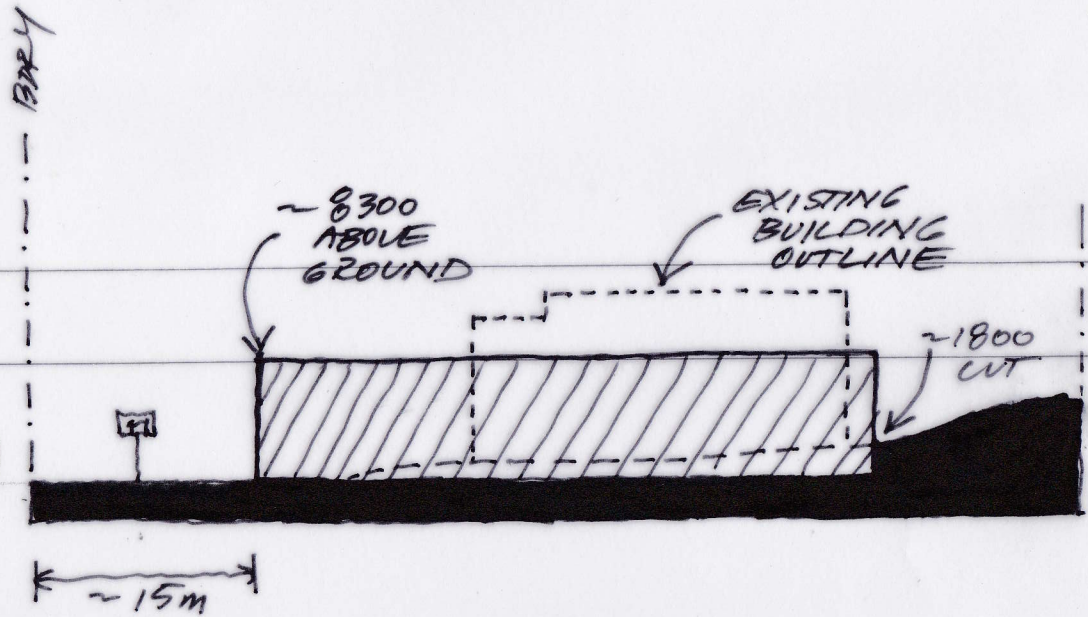


PROPOSED SCHEME



• APPROX. 1.4m HIGHER THAN EXISTING BUILDING.

ALTERNATIVE SCHEME



- APPROX. 3.2m LOWER THAN EXISTING BUILDING.
- APPROX. 5.5 LOWER THAN PROPOSED
- APPROX. 6m SHORTER THAN PROPOSED

CHS